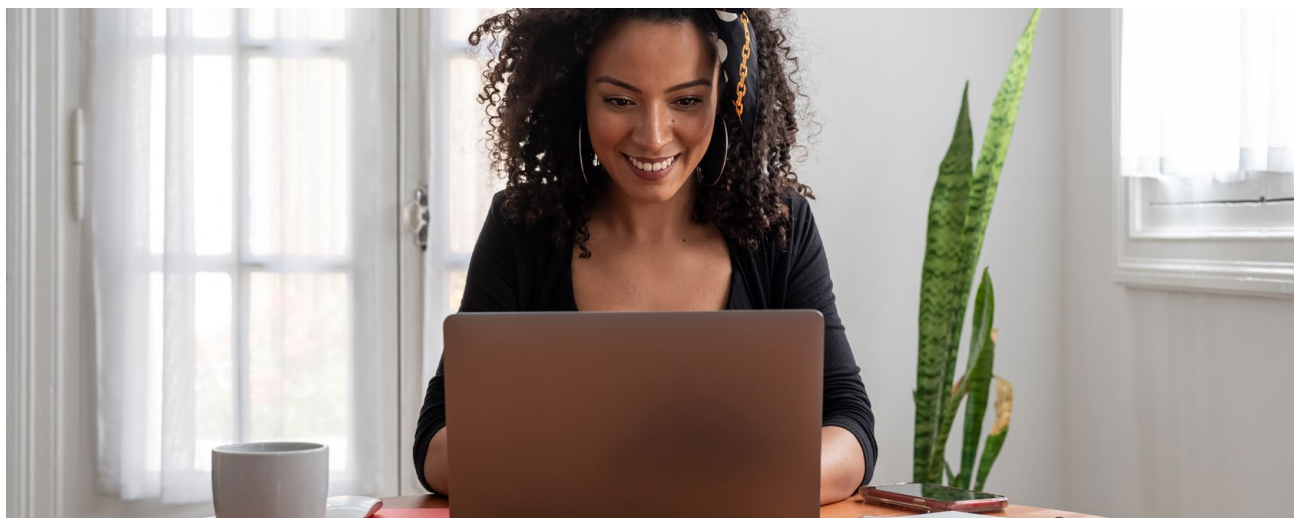
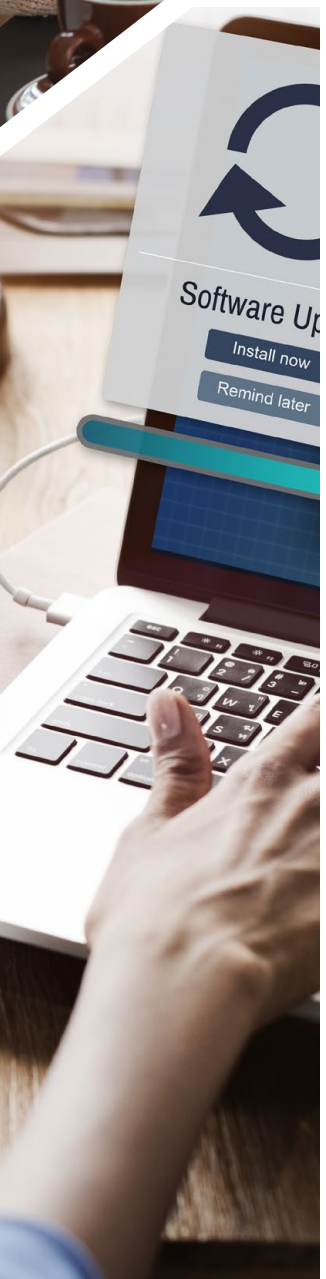
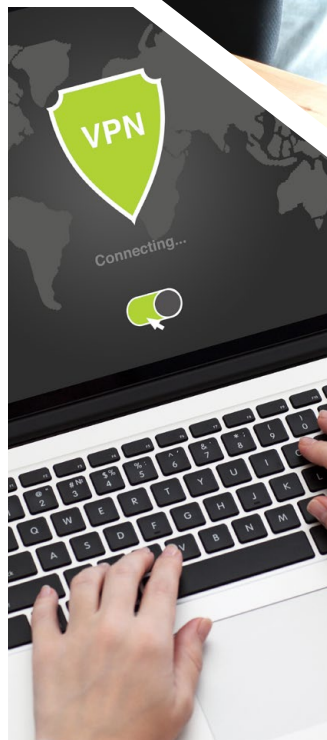




# Akative Work From Home™ *Anywhere*

WFH Made Simple With Fully  
Managed Solutions!







#### Make Setup Easy!

Pre-built solutions with hardware, software, & cabling.



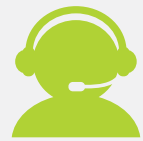
#### Live Person Assistance

We help you get connected & operating quickly.



#### Reduce Stress

We work behind the scenes so you can focus on work.



#### Providing Helping Hands

We're here whenever you need us & are happy to lend a hand.

## Akative Work From Home™ Anywhere

### WFH Made Simple With Fully Managed Solutions!

Let's face it, work from home presents new challenges to employees and companies. Setting up employee work from home (WFH) offices can be complicated with trying to give them access to your business network while also keeping the network secure. Plus, your employees still need to be able to communicate with each other and customers. However, setting all this up and maintaining it can be costly and challenging for your IT team.

Akative and our parent company, RDI, have a range of technology solutions to help get your WFH offices up and running and help your employees work reliably and securely. We preconfigure our technology so your employees can easily and quickly install and set up their WFH systems or we can assist them in setting up with our IT team. Our products are also secure, low-cost, and help reduce IT stress.

# WFH Packages & Services

## Prepackaged WFH Bundles

**PC Solution Bundle** 4  
Preconfigured WFH PC & hardware with everything you need to easily set up & use

**Network Connectivity Bundle** 4  
Easily & securely connect employees to your business network

## WFH Remote Tech Support

**Baseline PC Prep & Remote Deployment** 5  
Helping your employees get setup quickly & easily

**Thinix Helpdesk™ Support** 5  
Keeping technology running & reducing operational costs

## AssuredSecurity® Services

**Managed Firewalls & Security** 6  
Protect your business & WFH users

**VPN For Remote Work Access** 6  
Secure network access for your employees

**Thinix AssuredSecurity® For Endpoints** 7  
Fully managed patches, updates, & antivirus

**Managed Email & Filtering** 8  
Secure, layered defense & filtering to prevent cyber threats

**Managed Data Backup & Recovery** 9  
Protect your critical work with redundant backups

## Network Monitoring & Security

**iStatus®** 10  
Significantly improves productivity & reduces IT support costs

**iStatus Security™** 12  
Improve network security and reduce cyber risk with distributed, high-security, IoT-based monitoring

## WFH Connectivity

**RocketFailover® 4G LTE Backup Internet** 14  
Redundant or primary connectivity to keep your employees online 24/7

**Work From Anywhere With InternetAnywhere®** 15  
Mobile 4G hotspot connectivity for on-the-go users

**AkativeSD™ For SD-WAN Applications** 15  
Keeps business-critical applications such as VoIP phones connected & performing well

## Communication & AV Collaboration

**Thinix Voice™ – VoIP Phone Systems** 16  
Preconfigured phone systems to keep communications open & sounding professional

**Digitizing Tablets For WFH Collaboration** 16  
Easy virtual whiteboard tablets to screen share & take notes

**Professional Audio/Video For Conferencing** 17  
Easy-to-use enterprise AV equipment for video calls & meetings

Financing & custom packages available! Call us at 866-950-3392 or email [Sales@Akative.com](mailto:Sales@Akative.com).





## PC Solution Bundle

**Preconfigured WFH PC & Hardware With Everything You Need To Easily Set Up & Use**

Enable your employees to safely work from home with in-demand hardware. Akative has preconfigured packages available that provide everything your users need to set up remote work laptops or PCs to do their regular work. Akative makes setting up easy for your employees by preconfiguring PCs to allow for an easier user experience.

Our packages include secure hardware like laptops, PCs, keyboards, monitors, iPads, printers, scanners, cabling, and VPN access into your business network so that your users can access their essential files and virtual workspace.

## Network Connectivity Bundle

**Easily & Securely Connect Employees To Your Business Network**

One of the challenges of having employees work from home is connecting them to your business network while keeping their home networks separate. With our Network Connectivity Bundle this is easily accomplished. The bundle includes a fully managed, preconfigured firewall with onboard WiFi that is designed to co-exist with your user's existing home network. This ensures that your business network remains separated from your user's home network.

In addition, this bundle comes with iStatus, our network and application monitoring platform. With iStatus you will always know when there is a connectivity issue with a user's WFH system. IntelligentAlerts™ are sent directly to your smartphone so any detected issue can be quickly resolved.

Akative can also help you easily add a business network to your employee's home with an SSID dedicated to your office devices.

## Baseline PC Prep & Remote Deployment

Helping Your Employees Get Setup Quickly & Easily

In addition to providing preconfigured solutions and WFH packages, Akative is also able to help prep your businesses PCs and assist with the deployment of your WFH stations. Our experts can help your employees with PC imaging and also provide remote assistance to help get users connected and operational.

Akative is also able to onboard existing PCs into our managed services — allowing for managed helpdesk and managed updates. By having Akative assist with prepping and deploying WFH stations, your IT team is able to focus on their main, daily tasks and keep your business secure.



## Thinix Helpdesk™ Support

Keeping Technology Running & Reducing Operational Costs

Having remote employees at home can make it more challenging to provide proactive IT support to users that are now spread out. Akative offers tailored IT support programs that scale with your entire team. Akative can provide end-to-end IT support so that your users remain productive.

In more intricate cases, Akative can provide advanced IT support to assist your IT staff with more complex challenges introduced by WFH. With Akative support to have your users' backs, you can focus on daily operations and when issues arise, we help you proactively solve those issues with minimal interruption to your users.



## Managed Firewalls & Security

Protect Your Business & WFH Users

Cyber threats have more possible points of entry than ever before. Attacking your network through WFH users is a real possibility, and it's no longer enough to leave your security on autopilot. Our firewall management service ensures that your employees who need a firewall can have that present in their home office. We eliminate complications associated with additional firewall hardware by fully managing your firewalls' administration, log monitoring, and security to safeguard user files and your work network.

### Powerful Firewall Features



#### Intrusion Prevention Service (IPS)

Don't let malicious activity run amok in your network. RDI's Intrusion Prevention Service (IPS) shuts intrusions down.



#### Packet Filtering

Multi-gigabit packet filtering and transparent proxies mean true, line-speed security inspection on all traffic.



#### User-Application Control

Have highly granular control by category, application, or application sub-function to keep your network flowing and your environment safe.



#### APT Blocker

Our Advanced Persistent Threats (APT) Blocker gives you all the power, without the fear of complex implementation rules.



#### Secure, Offsite Logging

With offsite data logs, RDI protects your network information from external threats and provides immediate security alerts if there's suspicious network activity.



#### Security Audits

If applicable, RDI managed firewalls allow reports to be generated for PCI and HIPAA audits to ensure compliance standards are met.



## VPN For Remote Work Access

Secure Network Access For Your Employees

With a private VPN (virtual private network), you can also limit access to your network, helping keep threats out. With Akative managed VPN, you can allow your employees to securely access your business network via a private VPN without opening your network to additional cyber threats. Both solutions are fully maintained to ensure your network security remains at optimal performance.



## Thinix AssuredSecurity® For Endpoints Fully Managed Patches, Updates, & Antivirus

With WFH users spread out across multiple locations, keeping their workstations secure can be a challenge for IT teams who can't update or patch systems in person. Keeping PCs and laptops up-to-date can make all the difference when it comes to securing your business network from extraneous threats.

Thinix AssuredSecurity® combines essential auto-updates and auto-patches into a single managed security service to provide massive time and cost savings for your business. AssuredSecurity fortifies security on any network endpoint to protect from threats such as ransomware and ensures that user PCs or laptops remain up-to-date so your users can remain productive.



### Fortified System Security

AssuredSecurity automatically updates your third-party applications and antivirus software so your systems are always secure against cyberthreats.



### Massive Cost Savings

Achieve massive cost savings by consolidating your PC/endpoint management with all-in-one patching, security updates, monitoring, and more.



### Greater User Productivity

AssuredSecurity remotely patches and maintains your Mac/PC desktops without user-interruption so that your team can remain productive without hardware downtime.



### Proactive Security Checks

AssuredSecurity proactively hunts for malicious activity in your environment to respond before vulnerabilities are exposed to cyberthreats.

## Managed Email & Filtering

### Secure, Layered Defense & Filtering To Prevent Cyber Threats

With employees now forced to work outside the network perimeter, businesses face the risk of their internal data being attacked. Business email is one of the widest spread attack vectors being taken advantage of when it comes to WFH users and without the ability to easily communicate to your users about a phishing threat, employees may unknowingly introduce threats to your network.

Akative uses an approach with layered defense to stop phishing and malicious emails before they reach your network. This minimizes the possibility that phishing emails with ransomware or malware are introduced by your users. The last thing anyone wants is to compromise network security and integrity.



#### Email @your-company.com

Give your business a professional look with email @ your domain name.



#### Spam & Virus Protection

Our premium filtering keeps your inbox virtually free of spam and viruses.



#### Secure & Private Email

We will never read, sell, or scan your email content for advertising purposes.



#### End-User Training

Our email training educates staff on proper email protocol to avoid potential threats.





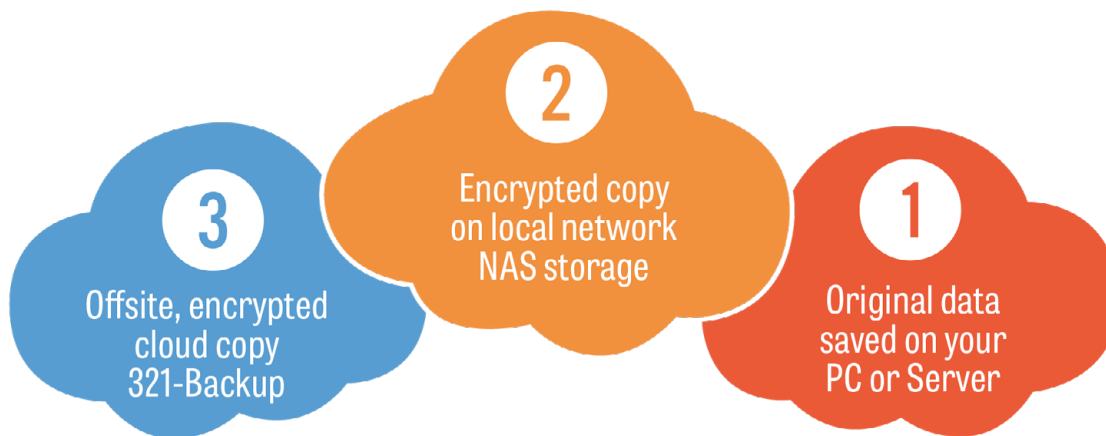
## Managed Data Backup & Recovery

### Protect Your Critical Work With Redundant Backups

Keeping track of important files can become a challenge when your WFH employees may be accessing your network and their desktop at the same time. Akative can assist in ensuring that both local and network files are always backed up. This prevents catastrophe should a user have a PC or laptop crash during their workday.

## Main Causes of Data Loss

- Human error, accidental deletions
- Sabotage, intentional deletions
- Fire, floods, & natural disasters
- Hardware/software failures
- Cryptographic malware, viruses, & hackers
- Data corruption



## Our Secret To Recovery

Akative uses multi-site replication practices to ensure that files exist in multiple places. With instant data backups and recovery, Akative cloud backup solutions are easy to deploy and provide confidence that data and applications are protected.

## Offering Feature-Rich Strategies to Protect Your Data



Secure Data Archiving



System State Backup & Bare-Metal Restore



Individual File Recovery & Backup Folders



Office 365 Data Backup



Military-Grade Data Encryption



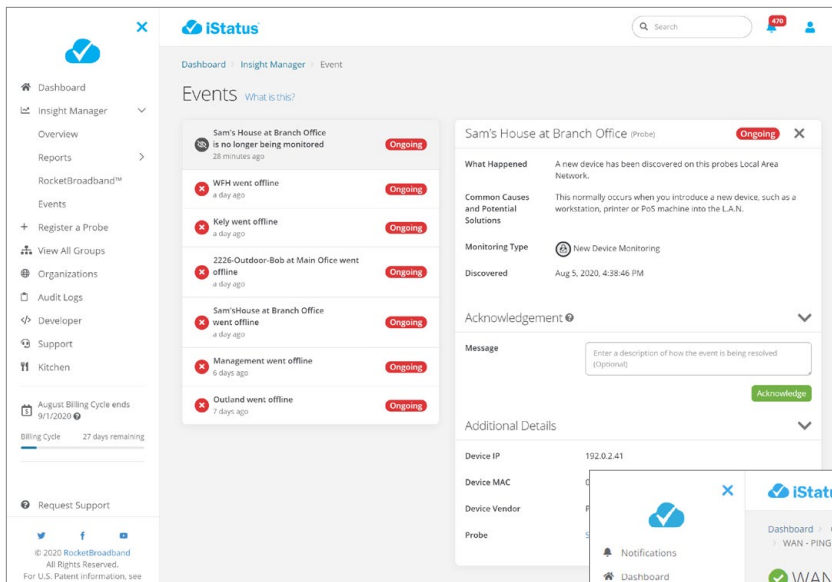
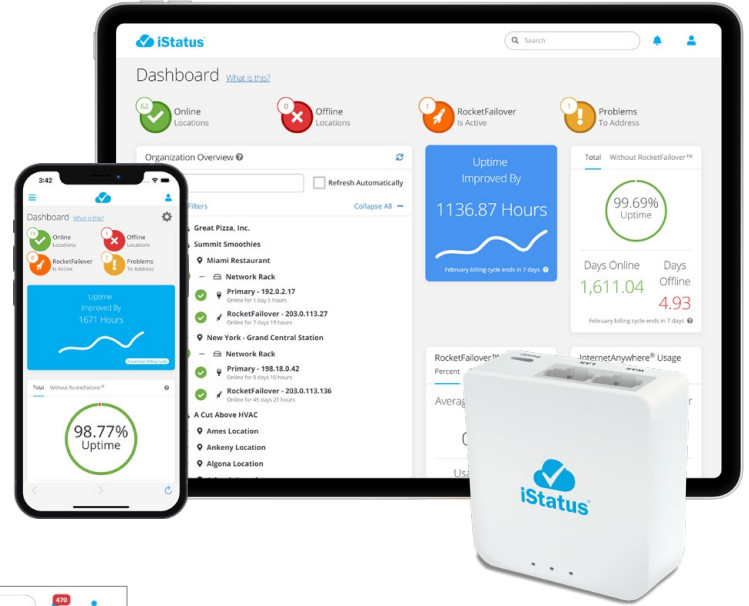
Network File Backup

## iStatus®

Significantly Improves Productivity & Reduces IT Support Costs

With employees working from home, IT teams are now face with far more 'downtime' events as consumer-grade Internet connections frequently fail. When user connections fail, diagnosing the problem and identifying who to call to fix the issue is critical in minimizing downtime. Akative reduces stress for your employees and your IT team with iStatus.

iStatus is ideal because it utilizes a low-cost 'probe' which is installed inside the firewall at your employees' home. Because it is inside the firewall, it has the ability to gain connectivity insight from the perspective of the user.

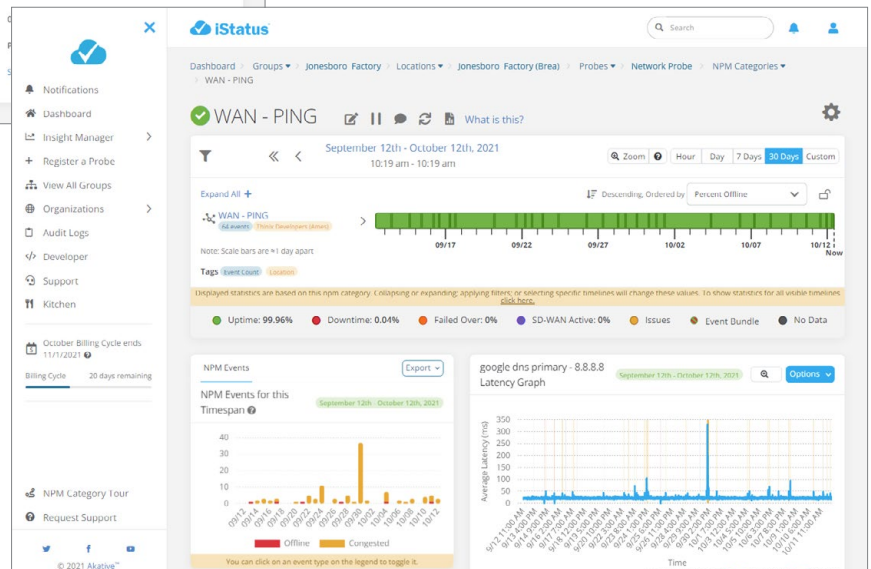


## iStatus Event Feature

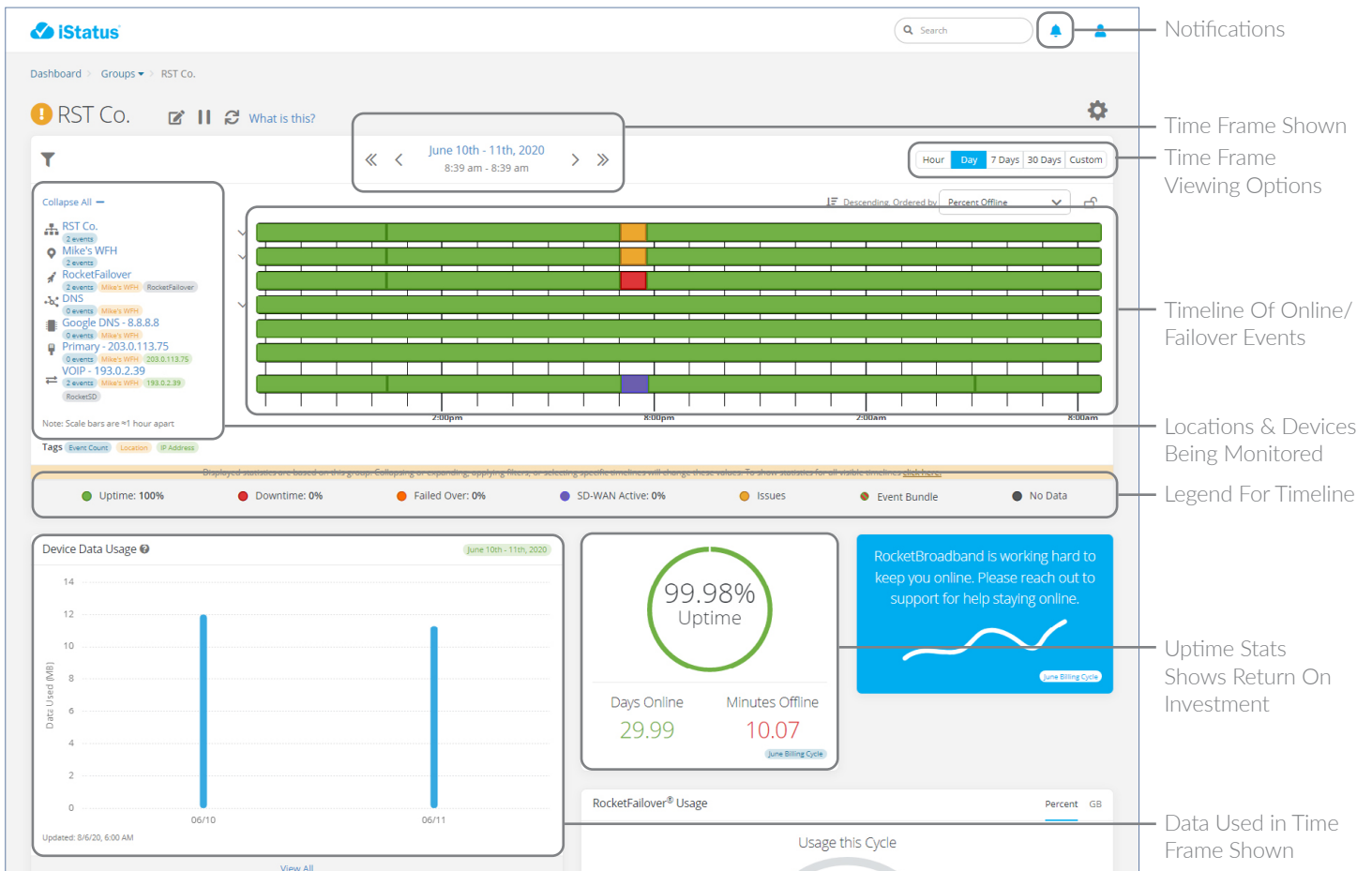
Allow your IT team to quickly and easily see what's happening on any WFH user network and detect network connectivity issues. This knowledge allows your team to identify issues and resolve them so your users can say productive.

## iStatus NPM™ Feature

Monitor key cloud applications, local resources, network protocols, and more with iStatus NPM (Network Performance Monitoring). Combined with CongestionDetection™, iStatus NPM provides Web App Performance Monitoring/ Web App Health Monitoring by tracking intermittent and sustained network congestion issues that weren't previously observable.







## iStatus Features Patented Technology Allowing It To:



**Monitor Internet Connectivity**  
iStatus monitors connectivity and generates alerts when connections fail



**Monitor VPN's & Critical Cloud Services Needed By The WFH Employee**  
VPN's, Cloud services, network services can all be monitored by iStatus



**Enable The IT Team To Quickly Determine The Source Of Problems**  
Quickly recognize and resolve issues with iStatus



**Provide Alerts To Users & Your IT Team**  
iStatus alerts reduce costs and help WFH users stay productive

## iStatus Works Anywhere With Any Network

iStatus acts as an essential glue-layer for companies as they seek to integrate many forms of connectivity, from different broadband, cellular, and satellite vendors. In addition, iStatus and provides an essential layer of visibility across multiple businesses, locations, data carriers, hardware, and networks - a true carrier, device, and location agnostic solution.

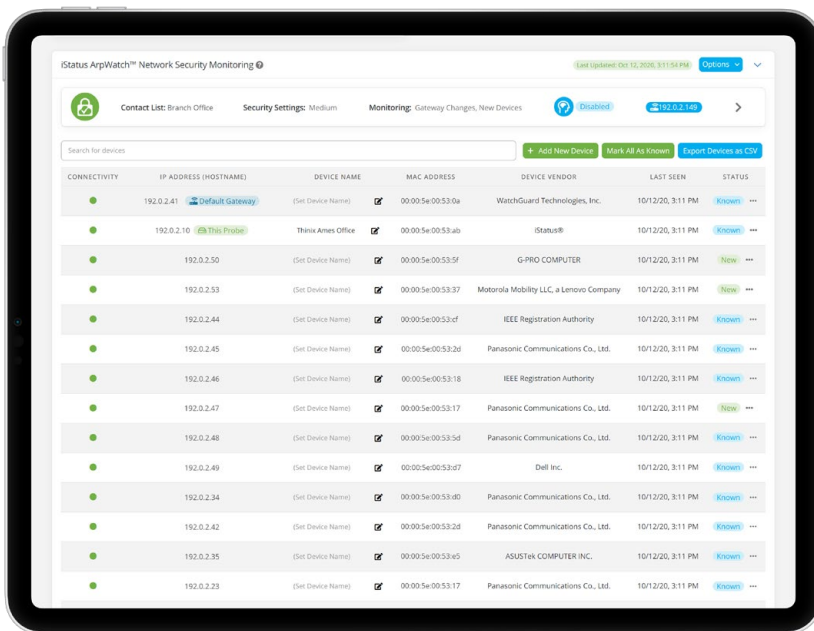
## iStatus Security™

Improve network security and reduce cyber risk with distributed, high-security, IoT-based monitoring

iStatus Security is a group of security features included in the iStatus Professional and iStatus Enterprise Service Plans. With these powerful features you can improve your overall network security.

The patented and patent-pending technologies contained in iStatus Security™ have been in development for over

10-years and represent a radical shift in network security monitoring. These tools enable business, government and military organizations to monitor the network for core, fundamental changes, and allow IT teams to quickly and easily implement revolutionary, cost effective, new monitoring that can dramatically improve network security.



ArpWatch also detects ARP poisoning and man-in-the-middle attacks to offer further insight. Easily monitor all of your network segments (while they remain isolated) without violating network security.

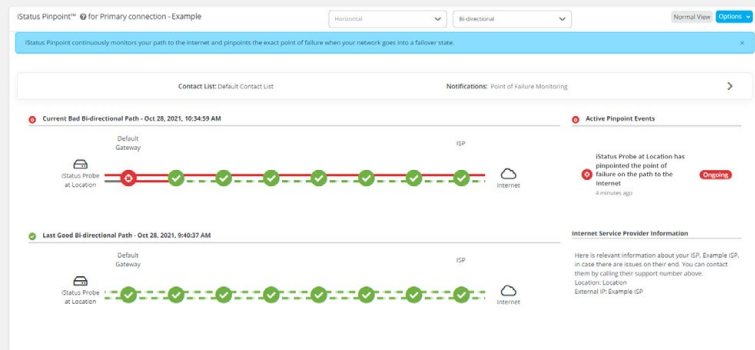
## iStatus ArpWatch™ Feature

When we think about network security, one of the most basic security considerations is knowing who, or what devices are on the network. It seems like an essential first-step in network security, but it's notoriously difficult for IT teams to know what devices are connected, and to manage that information over long periods of time, especially across multiple physical locations.

ArpWatch monitors your user's networks for new/rogue devices which could compromise security. Your IT team doesn't have to agonize over user devices compromising the business network, because ArpWatch's automated network discovery improves network security to detect threats immediately.

## iStatus Pinpoint™ Feature

iStatus Pinpoint further utilizes the AI-powered functions of iStatus to monitor and detect which portions of network segments are experiencing a network interrupting connection failure. Pinpoint allows vastly improved connectivity services to be seamlessly delivered by monitoring the Internet paths coming in and out of your network 24/7.



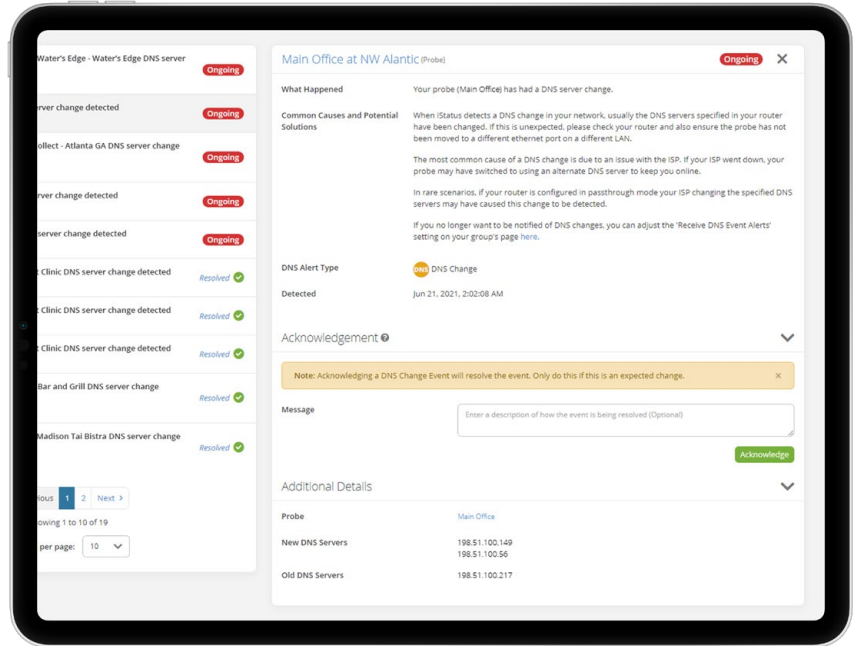


## iStatus ChangeDetection™ Feature

Maintain the security of your network with iStatus ChangeDetection. iStatus establishes a baseline and automatically documents critical network attributes such as the DNS servers which are in use, the MAC address of the default gateway, and the IP addresses of servers and other network devices.

This built-in feature alerts you when a change is made to any of those, indicating a misconfiguration, or worse, a possible cyberattack.

iStatus detects two of the most critical and most common DNS hijacking attacks, router DNS hijacks and man-in-the-middle attacks. Using these two iStatus features is among the easiest ways to protect your network today.



**Revolutionary 24/7 Security Monitoring**



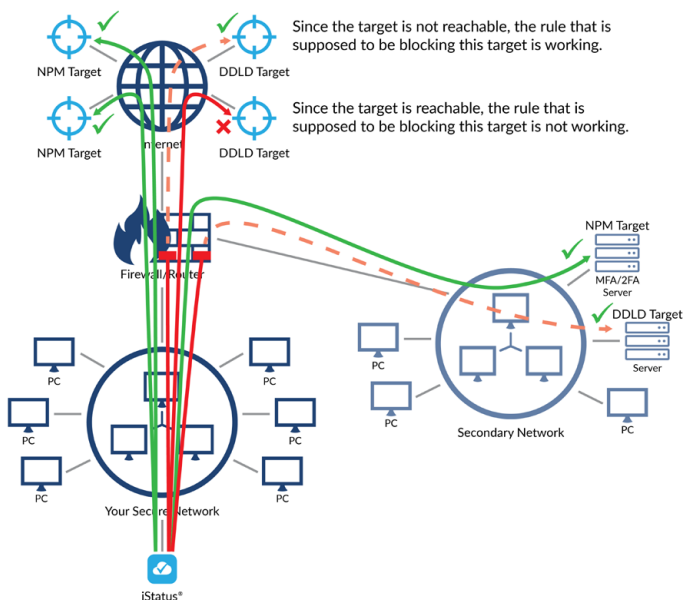
**Real-Time Visibility From Any Device With The App**



**Intelligent Alerts Inform You When Issues Are Detected**



**Simple Knowledge Not Complex Data**



## iStatus DDL™ Feature

Detect when devices on your network are able to access things they should not be able to access with iStatus DDL™ (Dynamic Data Leak Detection).

Managing high-security networks is difficult even for the most well organized companies. As firewall rules are updated or replaced, iStatus DDL, continuously tests network security – validating that security policies are being enforced. This ‘Trust but Verify’ approach is critical and provides a necessary auditing and compliance-logging feature.



## Managed 4G LTE Internet Failover

Redundant Or Primary Connectivity To Keep Your Employees Online 24/7

Internet connectivity is a necessity for any successful WFH user. But one of the challenges of working from home is that not everyone has access to a stable Internet connection and without it, lack the means to have productive workdays. While some users face limited Internet Service Providers (ISPs) in their area, others are simply struggling with the fact that home Internet is consumer-based and doesn't support the bandwidth demands for most business settings.

RocketFailover faces these issues head-on by providing your employees with a business-grade alternative connectivity solution. With RocketFailover, your users can stay online and connected to your business network over 4G LTE, even during Internet outages. Alternatively, RocketFailover can act as a primary connection for users that are geographically limited when it comes to an Internet availability.

RocketFailover is a plug-n-play solution with seamless, automatic failover, and fallback. This means that your IT team doesn't have to engineer anything to be able to drop this into a user's space, and the end-user doesn't have to worry about switching the device on or off. RocketFailover will keep users connected so that they can remain productive, and your business can continue to operate as usual.



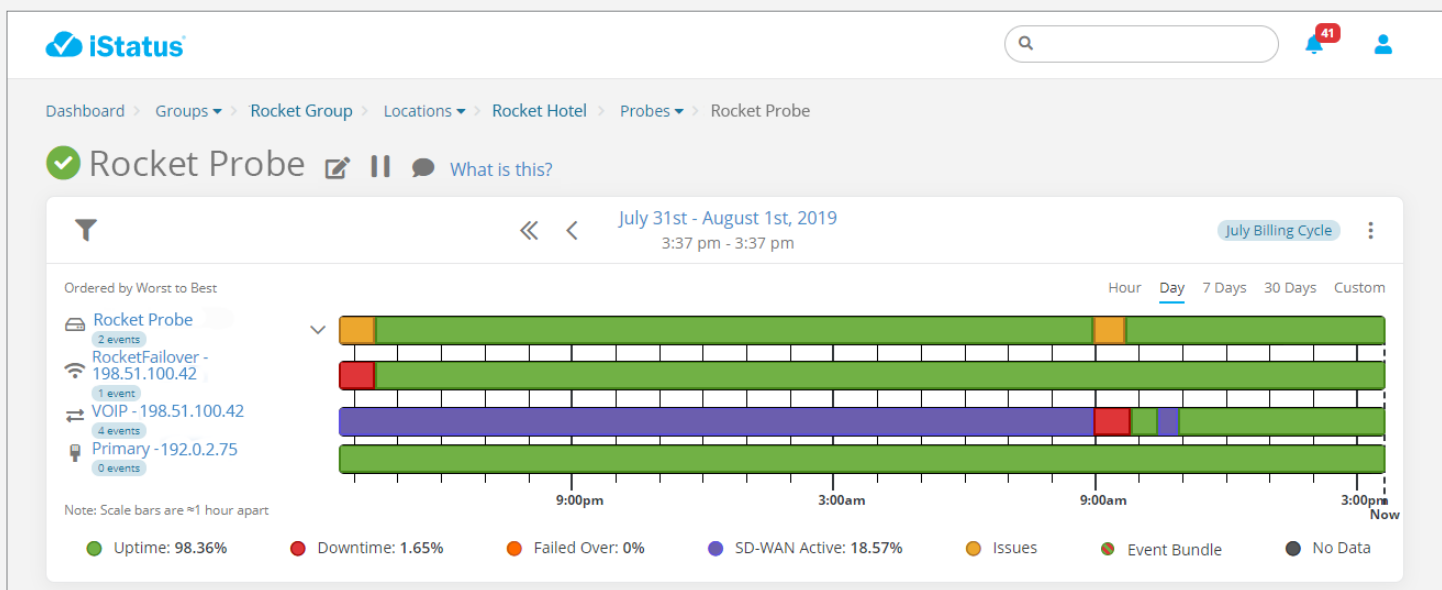


## Work From Anywhere With InternetAnywhere®

Mobile 4G Hotspot Connectivity For On-The-Go Users

Whether your employees live in locations that don't have great Internet connectivity, or they're on-the-go, InternetAnywhere is a reliable solution to keep your team connected. Because companies have moved to WFH arrangements, users have the freedom to pick a workplace that's most conducive to their productivity. With fast, ready-to-use 4G hotspots, InternetAnywhere provides the same convenience of a traditional broadband connection and supports business connectivity needs no matter where users go.

Easy to install, InternetAnywhere is preconfigured as a plug-and-play technology to deliver business-class Internet connectivity directly to WFH users.



## AkativeSD™ For SD-WAN Applications

Keeps Business-Critical Applications Such As VoIP Phones Connected & Performing Well

One of the simplest and cheapest ways to interconnect WFH users is over a VPN connection. Nevertheless, such a connection presents some major drawbacks for VoIP phones. As your WFH users may rely on both VPN connections and VoIP phones to communicate and conduct regular business, stable connectivity struggles to support both simultaneous. While this may not happen frequently, some employees simply cannot be down when it comes to their VoIP connectivity.

AkativeSD will enable you to quickly deploy a solution to improve connectivity performance to better support critical business systems such as VoIP. AkativeSD also provides 4G LTE backup Internet connectivity when needed. AkativeSD has granular controls that ensure your desired business-critical applications always use the best connection possible.

## Thinix Voice™ – VoIP Phone Systems Preconfigured Phone Systems To Keep Communications Open & Sounding Professional

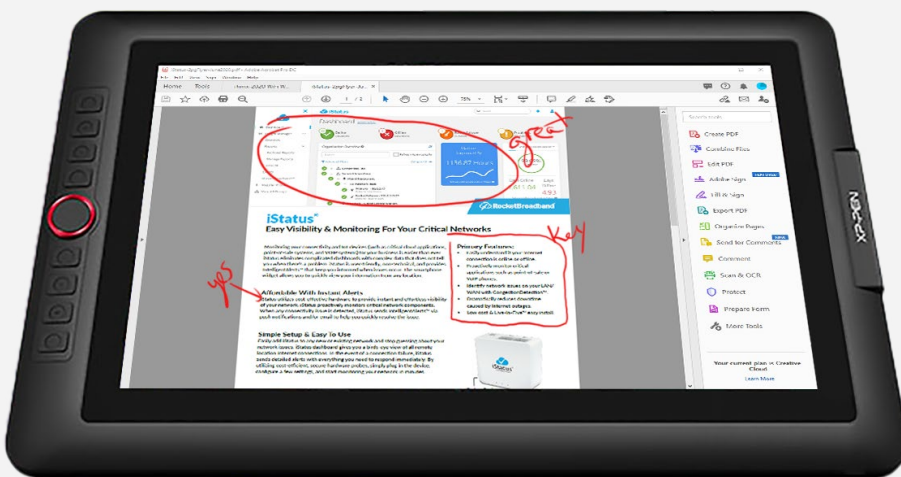
With the increase in WFH employees, there's now an increased demand for effective ways of communicating. All you need is the right setup and a stable Internet connection to get started with Thinix Voice.

Akative offers enterprise-grade VoIP phone systems to connect your entire team with familiar extension numbers and quick-dial setup. Plug your VoIP phone adapter into any available broadband connection, and you can use your VoIP phone from anywhere in your home office. Your phone will work exactly as if you were still at the office with professional quality sound.



## Digitizing Tablets For WFH Collaboration Easy Virtual Whiteboard Tablets To Screen Share & Take Notes

Most employees probably have laptops that can be taken for working on-the-go, or just working from someplace other than a desk. But if you have a tablet, you've got another powerful tool in your WFH arsenal. Akative Digitizing Tablets offer a lightweight, easy way to take notes, screen share, or turn any professional meeting into a virtual whiteboarding session with a few clicks.



Our tablets can be preconfigured to work best for the user in mind. Whether it's a graphic designer that needs the freedom to digitally draw, or a marketing manager that needs quick access to the company's social media apps, Akative tablets are designed to help your users collaborate and be just as productive as they are in an office setting. We can also offer easy add-ons such as wireless keyboards. This allows for quick note-taking or web browsing and can further ensure that working from home is successful.





## Professional Audio/Video For Conferencing Easy-To-Use Enterprise AV Equipment For Video Calls & Meetings

If you are now a WFH user, communicating virtually to collaborate or talk to customers is now more important than ever. However, many perils such as audio echo, fuzzy video calls, or dropped phone calls face users in mass. To keep your employees connected as normal, Akative offers a number of excellent AV solutions to tackle these issues directly.

### DSP Based Audio Solutions

- Connect your PC & smartphone
- Echo cancellation
- Bluetooth



## Look & Sound Professional With Proper AV Equipment

By using professional-grade hardware, speech is easier for the users to understand, and annoying echo is significantly reduced or eliminated altogether. Our system is easy to install and environmentally versatile so that your WFH employees simply plug it in and have professional sounding audio no matter what video conferencing platform is used.

### Lighting & Webcam Solutions

- High resolution cameras
- Adjustable LED lighting



# Akative Work From Home™ Anywhere

**Financing & Custom Packages Available!**  
**Call Us At 866-950-3392 Or Email [Sales@Akative.com](mailto:Sales@Akative.com).**



1-866-950-3392  
[Sales@Akative.com](mailto:Sales@Akative.com)  
[Akative.com](http://Akative.com)

2022-1