

MobileCommand™

Enterprise-Class, Cellular Internet Service Anywhere You Need It

Be Prepared For Anything

Coronavirus (COVID-19) has the potential to spread rapidly throughout the United States. As you prepare, you may be looking for data connectivity solutions for Mobile Healthcare, Electronic Medical Records (EMRs), Telehealth, logistics, police, business, or military applications.

Our MobileCommand™ solution is a managed, enterprise-class, 4G cellular Internet connection designed for mobile command centers, and emergency connectivity applications.

The service delivers a high-speed Internet connection with high reliability via a commercial grade cellular modem. It can be used in a variety of ways, such as delivering Internet access to mobile command centers, mobile users, mobile work-groups, and disaster situations. MobileCommand can be used by healthcare, government, or by military units to provide immediate connectivity with enterprise features, at affordable prices.

Wherever Your Business Takes You, Stay Connected

Flexible data pricing with very inexpensive 4G data service means you can have MobileCommand systems in your emergency response vehicles and trailers ready-to-go any time, and anywhere you need them!

Fixed IP address options allow you to more easily create branch-office VPN connections (BOVPN) using MobileCommand.

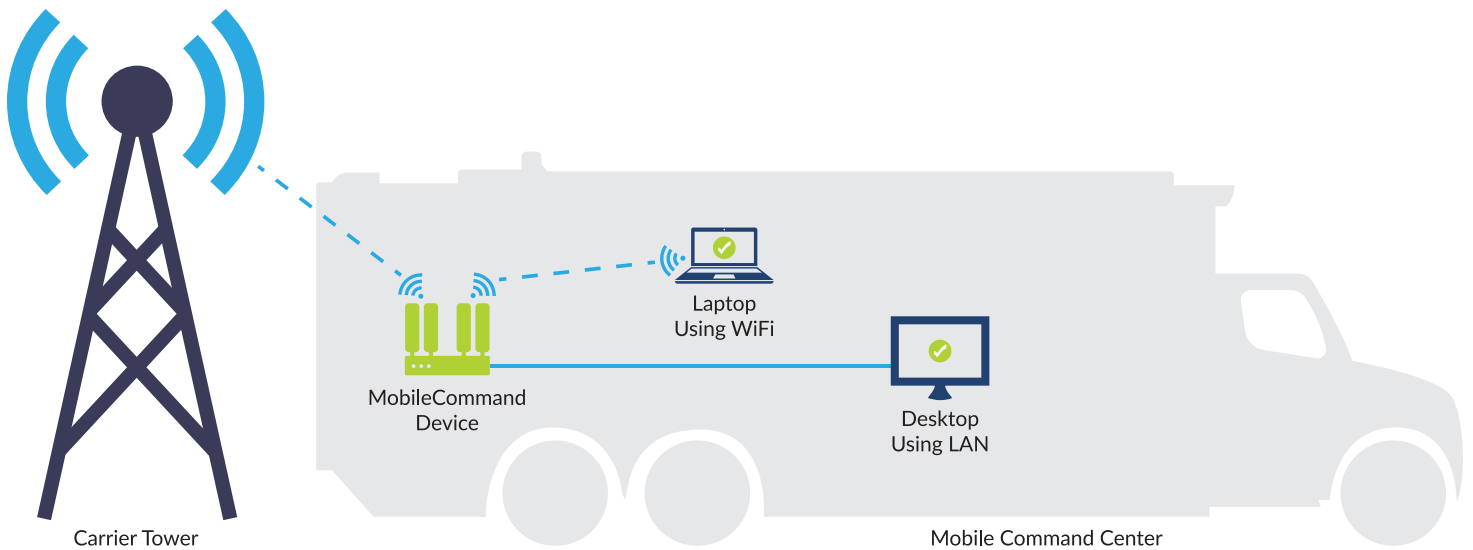
Our integrated data tracking and monitoring app, iStatus, gives you visibility to data used and sends alerts. iStatus can be added to allow Internet connections, cloud services, and other devices to be monitored.



How Does MobileCommand Work?

A MobileCommand device is placed in your vehicle, trailer, or building. The MobileCommand device receives a 4G LTE signal via built-in or external antennas from the cellular network. The device then provides Internet access via the LAN ports or traditional WiFi technology using the onboard hotspot.

The MobileCommand device is a specialized cellular modem that has many features allowing it to be a much better choice than consumer-grade devices.



Key Features



Setup In Minutes

MobileCommand features an easy-to-follow connection card, to allow emergency response personnel to establish Internet connectivity for a mobile command center within minutes.



Flexible Data Pricing

With very inexpensive 4G data service, you can have MobileCommand systems in your emergency response vehicles and trailers ready-to-go any time, and anywhere you need them!



Fixed IP Address

Fixed IP addresses allow you to easily create branch-office VPN connections (BOVPN) using MobileCommand.



Data Tracking & Monitoring

iStatus® is our integrated data tracking and monitoring app that gives you visibility to data used, and sends alerts to any smartphone or PC. iStatus probes can be added if desired, to allow you to provide remote monitoring of Internet connections, cloud services, and other devices.

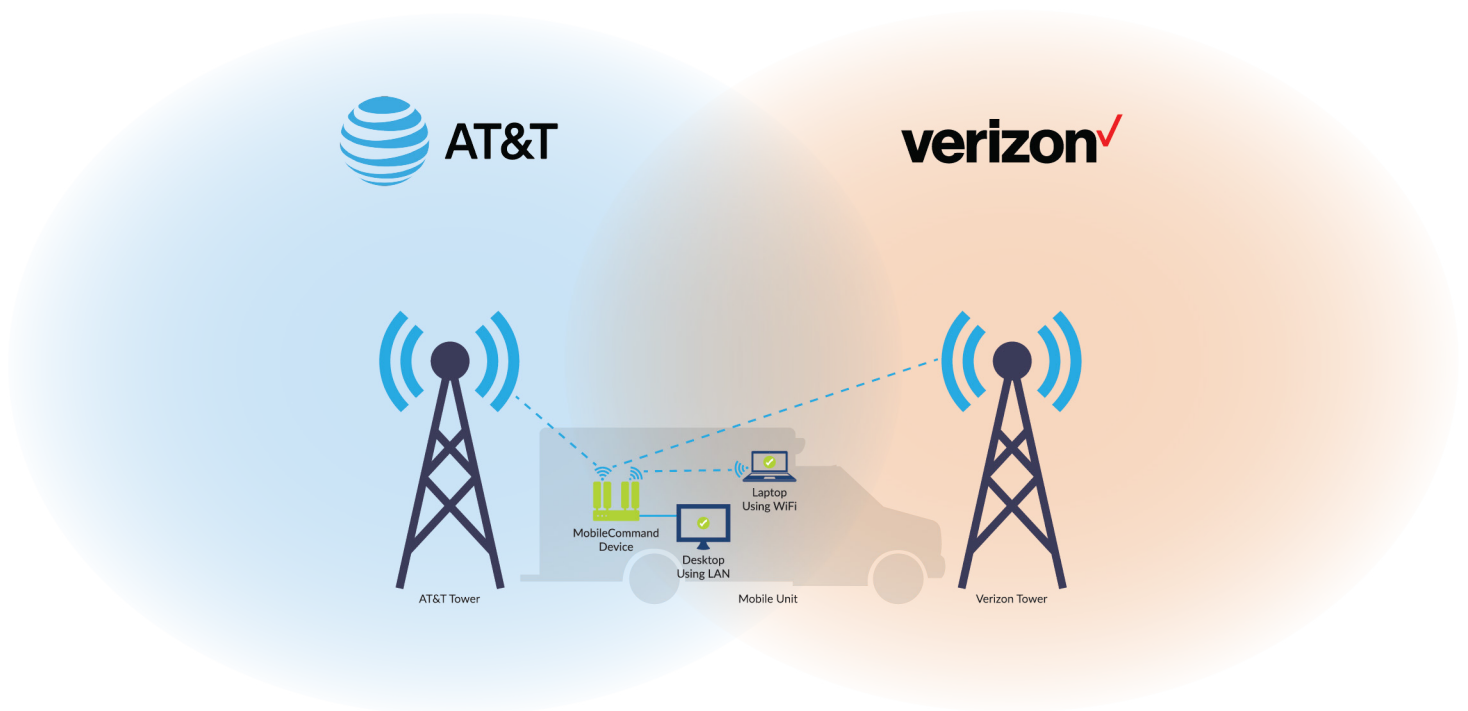
Multi-Carrier Redundancy

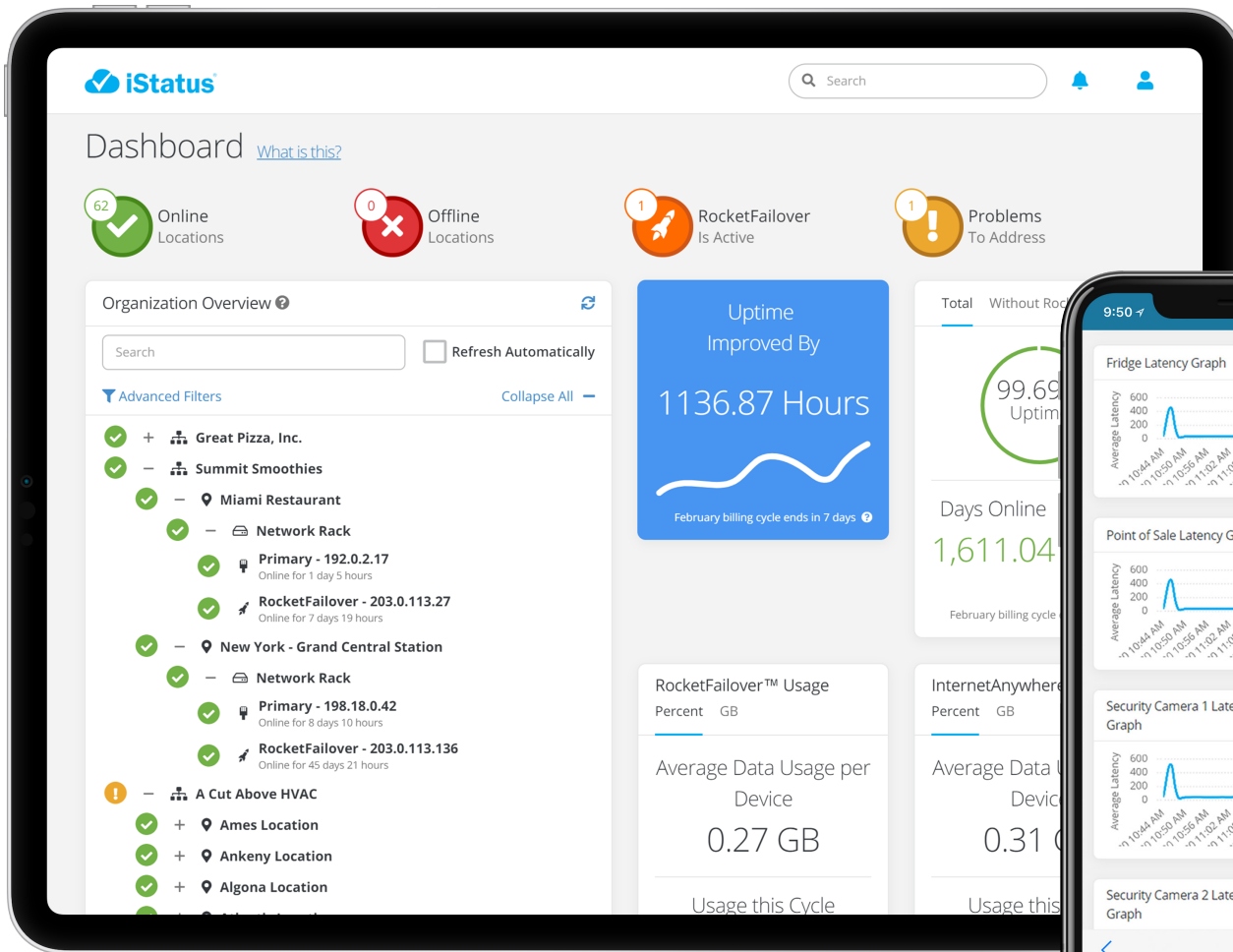
Akative is the only one able to offer multi-carrier redundancy and multi-SIM solutions. By partnering with both AT&T and Verizon we are able to provide 4G LTE connections via one or both carriers. With a multi-carrier connection, you gain some powerful advantages that you aren't able to get with a single-carrier connection.

Multi-Carrier Advantages

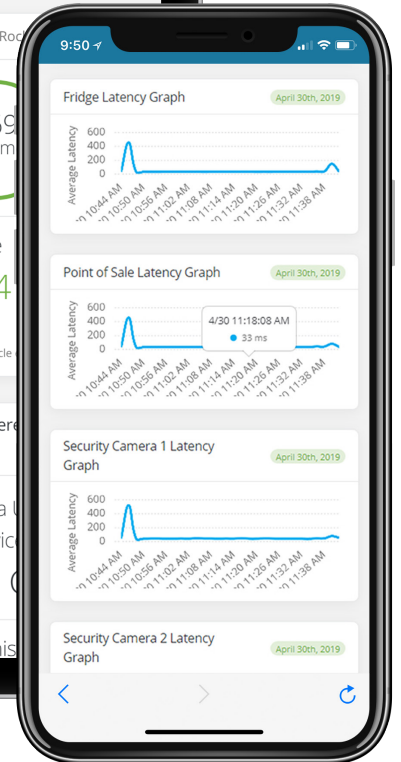
Having access to both carriers makes it possible for you to load balance traffic between the two carriers. You could also use the second carrier as a backup 4G LTE connection should the primary carrier you use has an issue.

If you have a mobile unit, like a mobile command center, having access to both AT&T and Verizon ensures that you have more coverage throughout the US. With the ability to switch between both carriers, you can always ensure that you use the strongest available connection.





iStatus Dashboard



iStatus NPM Latency Graphs

iStatus®

Akative makes connectivity monitoring easier than ever with iStatus. No more complicated dashboards, constant alerts, or weeding through complex data to figure out the problem. iStatus allows you to view your connections, monitor usage, and verify backup connections are ready, all in one unified platform.

Engineered to be a cost-effective, multi-site network connection monitoring tool, iStatus unites IT professionals and business staff, with simple network alerts. iStatus is user-friendly, non-technical, and has key features such as the widget, which allow you to view your network information without even logging into the dashboard. With constant connection monitoring at your fingertips, iStatus takes the guesswork out of IT management and provides instant ROI the first time a connection fails.

iStatus NPM™

With iStatus NPM (Network Performance Monitoring), an add-on license for iStatus, Akative delivers massive savings versus competing solutions. With the power to monitor up to 10 network targets, NPM helps daily operations and guest-facing transactions. A target consists of one IP address, hostname, or website monitored via PING/HTTP/HTTPS.

NPM monitors intermittent and sustained network congestion issues that weren't previously observable by IT staff. In addition, iStatus NPM provides timeline reporting to allow insights to be correlated and sends alerts when networks become increasingly unusable or congested over time (degradation) — allowing executives and operation teams to understand if network issues are from users, IoT devices, or other critical systems.

Flexible Options To Fit Your Requirements & Budget

Need WiFi? High-redundancy? Or need a 12-volt operation? What about flight cases/travel cases? No problem!

- **Onboard WiFi** for easy MobileCommand implementation.
- **Multi-Carrier redundancy**, and multi-SIM solutions that enable you to switch between, or load balance traffic between, AT&T and Verizon.
- **Support for 115v (AC) operation** or 12-volt battery operated (DC) operation with the use of a 12-volt adapter, or 12-volt inverter or battery-based portable power solution.
- **Easily installed magnetic antennas** or permanent vehicle-mounted antenna solutions are available.
- **NAT, or IP pass-through operation**, allows you to use our 4G device as a NAT firewall or allows our service to deliver an external IP to a firewall that you manage.
- **Hard-case or soft-case** based solutions allow you to keep all the bits and pieces in one easy-to-deploy solution.
- **High-availability solutions** are available with preconfigured redundant firewall clusters supporting any number of broadband, 4G, wireless, or satellite connections.
- **iStatus connectivity monitoring** monitors all of your Internet connections tracking uptime, data usage, SD-WAN traffic flows, network congestion, signal strength, congestion, & more.
- **iStatus NPM** is a software license for iStatus, allowing you to monitor local devices, cloud services, and connections. NPM also generates alerts and reports.

Our connections don't go to sleep, have no data throttling, and have the enterprise-class features you need!



We've Got Your Back

Our team of professionals stands ready to assist you with any question or configuration issue you may have. From setup to monitoring to technical questions, we stand ready to assist you.

Why Choose MobileCommand™?

✓ = Included ✗ = Not Included

Features	MobileCommand™	Competing Solutions From 4G Carriers
Live-In-Five™ Easy Setup	✓	✗
Dedicated US-Based Support Team	✓	✗
Static Public IP Address	✓	\$500 Option
Multi-Carrier Options	✓	✗
Always-On™ 4G LTE Connection (Doesn't Sleep)	✓	✗
No Rate-Limiting	✓	✗
Multi-Site & Multi-Line Data Pooling	✓	✗
iStatus® Integrated Monitoring & Alerts	✓	✗
Low-Cost, High-Volume, Enterprise-Class Data Plans	✓	✗
Flexible Devices, Options, & Configurations	✓	✗

MobileCommand™ Bundles

Bundle	WiFi	Carrier	Features	Upfront Cost	Annual Cost*
MC1	✗	Verizon	Static IP, DHCP, NAT, Cat-3 device with up to 100Mbps x 50Mbps operation	\$229.95	\$199.95
MC2	✓	Verizon Or AT&T	Static IP, DHCP, NAT, 2.4Ghz WiFi, Cat-5 device with up to 150Mbps x 50Mbps operation	\$399.95	\$199.95
MC3	✓	Verizon Or AT&T	Static IP, DHCP, NAT, 2.4Ghz WiFi, dual-SIM, Cat-5 device with up to 150Mbps x 50Mbps operation	\$499.95	\$229.95
MC4	✓	Verizon & AT&T	Static IP, DHCP, NAT, 2.4Ghz WiFi, dual-SIM, Active-Active Dual-Carrier, Cat-5 device with up to 150Mbps x 50Mbps operation	\$999.95	\$259.95

* Data is sold separately. Annual Cost is based on a 24-Month Agreement. Pricing subject to change.



MobileCommand™ Data Plans & Benefits

	Pay-As-You-Go	Block-Data
Low up-front cost	✓	✓
Optional TopOff™ billings ensure you always have data	—	✓
No Contract or penalties for cancellation	✓	✓
Non-Expiring AnyTime™ Data - Use your data any time. Data doesn't expire during your agreement period.	—	✓
Multi-Carrier data allows you to use either AT&T or Verizon	✓	✓
Data usage notifications - powered by iStatus®	✓	✓
No Overages - with pre-defined data caps	✓	✓
No Monthly Fees - Easy annual billing for service	—	✓

MobileCommand™ Pay-As-You-Go Data Plan Details

	Pay-As-You-Go	Data Cap
Data Cost per GB from 1 to 25 GB per Month. 25 GB data cap	\$19.95/GB	25 GB

MobileCommand™ Block Plan Details

	Pay-As-You-Go	Data Cap
Data Cost per GB from 1 to 10 GB	\$19.95/GB	1-10 GB
Data Cost per GB from 11 to 25 GB	\$17.50/GB	11-25 GB
Data Cost per GB from 26 to 99 GB	\$15/GB	26-99 GB
Data Cost per GB from 100+	\$12.50/GB	100+ GB

MobileCommand™ Options

Option	Description	Pricing
Soft-Case	Blue, soft-case 13"x8.5"x2.5"	\$30.00
Hard-Case	Waterproof orange flight case with black foam	\$230.00
Mag Antennas	Pair of 4G LTE magnetic base antennas 12' cable	\$60.00
HP 8-Port Switch	8-Port managed HP Ethernet Switch	\$165.00
HP 24-Port Switch	24-Port managed HP Ethernet Switch	\$243.00
DC Converter	DC to AC converter	Call
Mobile DC Power Supply	Mobile DC power supply with two AC outlets & charging ports	Call

NOTE: All pricing within this brochure is subject to change.